



TIMBER SMART TABLE

ABOUT US:

Timber For Electronics Company is the authorized distributor for Timber Smart Tables in the Middle East who has worked with a group of talented and experienced contemporary furniture designers to produce Timber Smart Tables.

The tables features polished edges and hidden refrigerators made of the most durable materials, With the belief that blending technology and home furnishing should not sacrifice durability and appeal.

Timber For Electronics Company is registered in the Ministry of Commerce with Commercial Registration No:434165

CONTACTS US

WEBSITE: WWW.ORDERTIMBER.COM

INSTAGRAM: [TIMBER.KW](https://www.instagram.com/timber.kw)

EMAIL: TIMBER.KW@HOTMAIL.COM



OUR **PRODUCTS**

TIMBER SMART TABLE **135 L PRO**



ALL PRODUCTS HAVE A ONE-YEAR WARRANTY
AND ALL SPARE PARTS ARE AVAILABLE WITH US.

TIMBER SMART **TABLE 135L PRO**
FEATURES:



1- TWO REFRIGERATOR DRAWER



2- BACK SHELF



3- BUILT IN SPEAKER



4- REAR POWER OUTLET



5- WIRELESS CHARGER



6- LED LIGHT



**7- TWO USB PORTS TO CHARGE DEVICES
ONE USB TYPE C FOR FAST CHARGING**

TIMBER SMART **TABLE 135L PRO**

COLORS:

WHITE



BLACK



WOOD

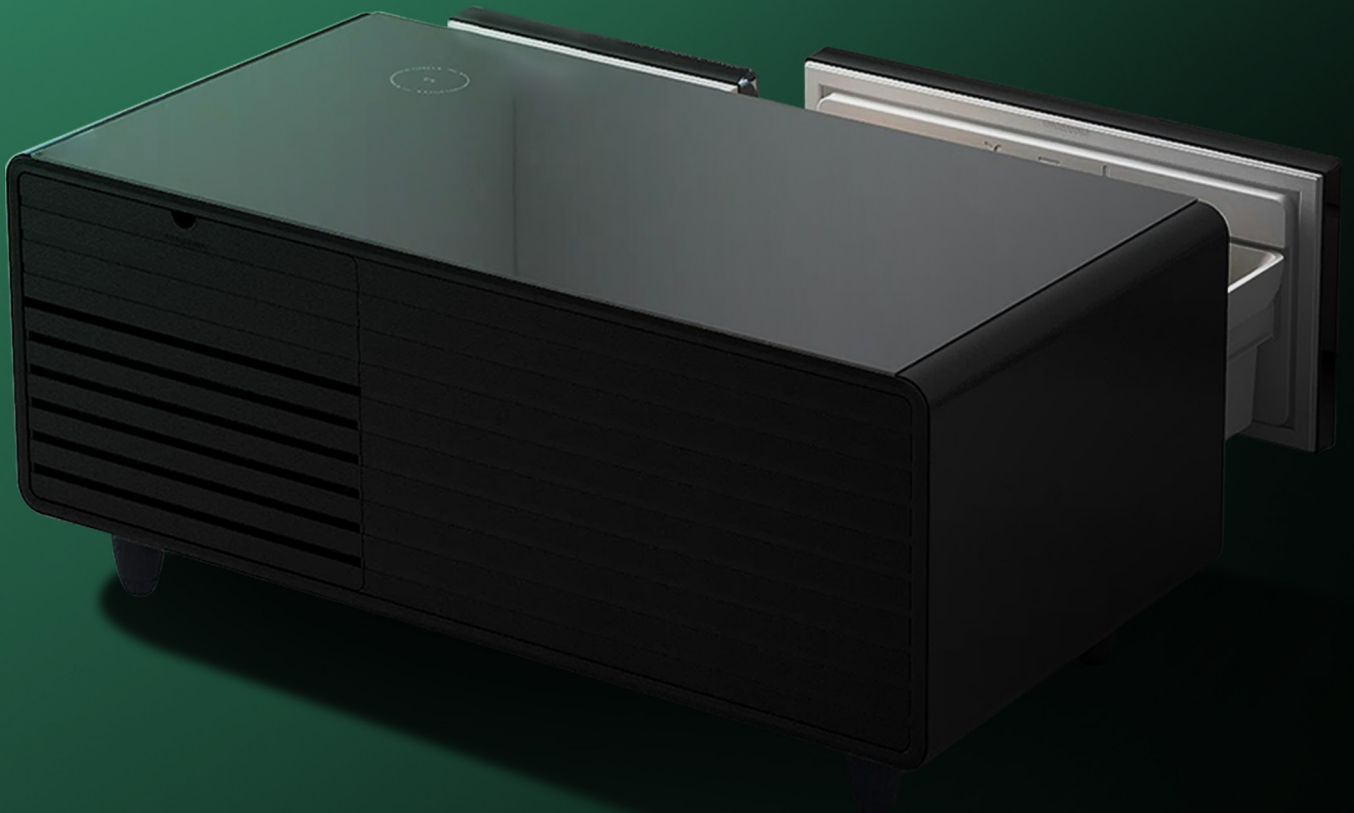


TIMBER SMART **TABLE 135L PRO**

DIMENSIONS:



TIMBER SMART TABLE
90L PRO
(WITHOUT SPEAKER))



ALL PRODUCTS HAVE A ONE-YEAR WARRANTY
AND ALL SPARE PARTS ARE AVAILABLE WITH US.

(WITHOUT SPEAKER)

TIMBER SMART **TABLE 90L PRO**

FEATURES:



1- REFRIGERATOR DRAWER
1-5 CELSIUS (COOLING)
+ FREEZER DRAWER
-12 CELSIUS (FREEZER)



2- REAR POWER OUTLET



3- MANUAL CONTROL



4- TWO USB PORTS
TO CHARGE DEVICES



5- WIRELESS CHARGER

(WITHOUT SPEAKER)
TIMBER SMART **TABLE 90L PRO**
COLORS:

WHITE



BLACK



(WITHOUT SPEAKER)
TIMBER SMART **TABLE 135L PRO**

DIMENSIONS:

WIDTH 59^{CM}

LENGTH 105^{CM}

HEIGHT 46^{CM}



TIMBER SMART TABLE

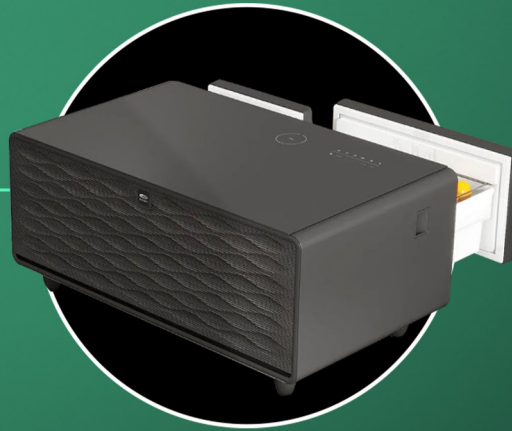
90L PRO

(WITH SPEAKER)



ALL PRODUCTS HAVE A ONE-YEAR WARRANTY
AND ALL SPARE PARTS ARE AVAILABLE WITH US.

(WITH SPEAKER)
TIMBER SMART **TABLE 90L PRO**
FEATURES:

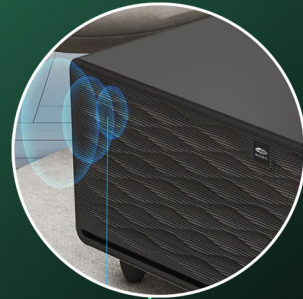


1- REFRIGERATOR DRAWER
1-5 CELSIUS (COOLING)

+ FREEZER DRAWER
-6 TO -12 CELSIUS (FREEZER)



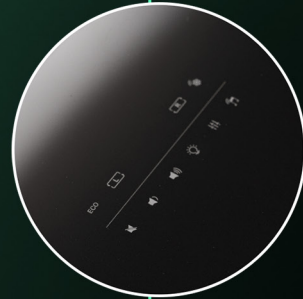
2- WIRELESS CHARGER



3- BLUETOOTH SPEAKER



4- USB TYPE C PORT
FOR FAST CHARGING



5- TOUCH CONTROL



6- TWO USB PORTS
TO CHARGE DEVICES

(WITH SPEAKER)
TIMBER SMART **TABLE 90L PRO**

COLORS:

WHITE



BLACK



(WITH SPEAKER)

TIMBER SMART **TABLE 135L PRO**

DIMENSIONS:

WIDTH 59^{CM}

LENGTH 105^{CM}

HEIGHT 46^{CM}



TIMBER SMART SIDE TABLE **30L**



ALL PRODUCTS HAVE A ONE-YEAR WARRANTY
AND ALL SPARE PARTS ARE AVAILABLE WITH US.

TIMBER SMART **SIDE TABLE 30L**

FEATURES:



1- REFRIGERATOR DRAWER
4-12 CELSIUS (COOLING)



2- WIRELESS CHARGER



3- TWO USB PORTS
TO CHARGE DEVICES



4- COOLING STORAGE
DRAWER FOR STORING
MEDICINES OR COSMETICS

TIMBER SMART **SIDE TABLE 30L**

COLORS:

WHITE



BLACK

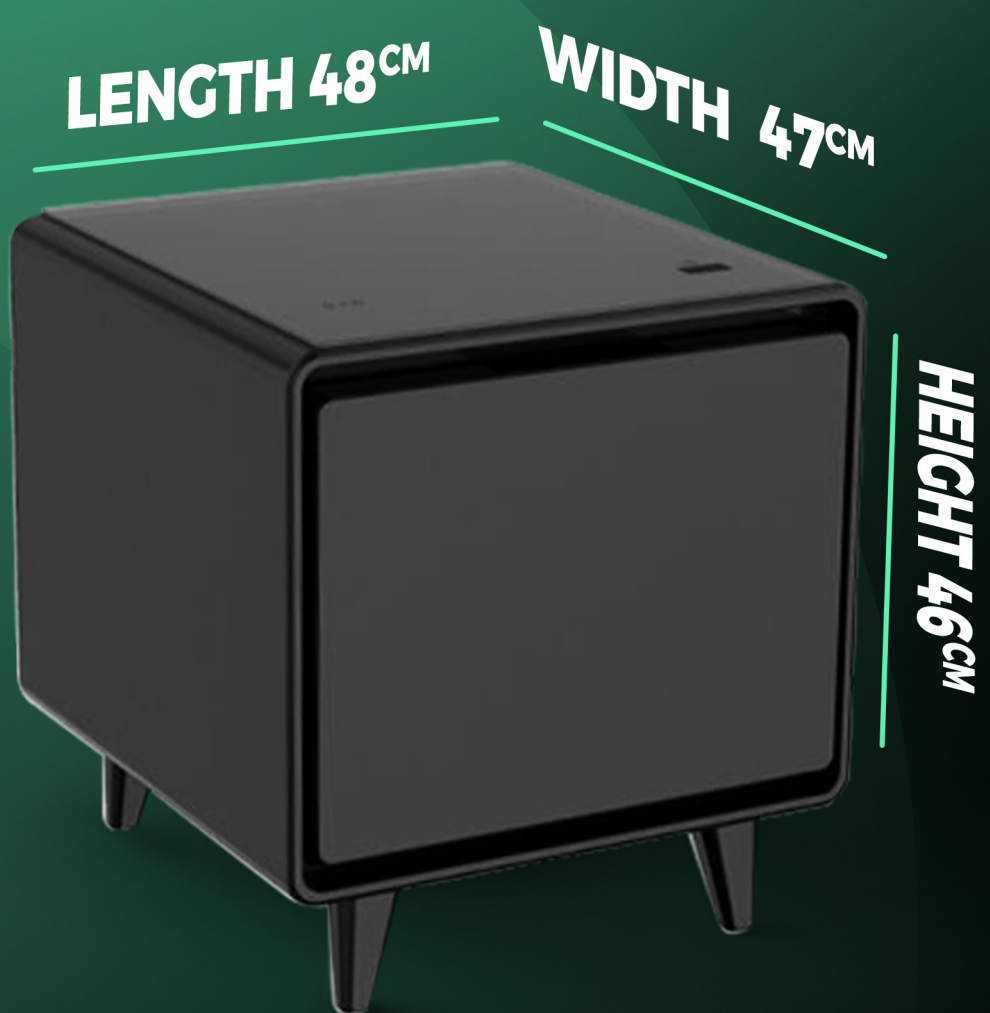


WOOD



TIMBER SMART **SIDE TABLE 30L**

DIMENSIONS:





THANK YOU